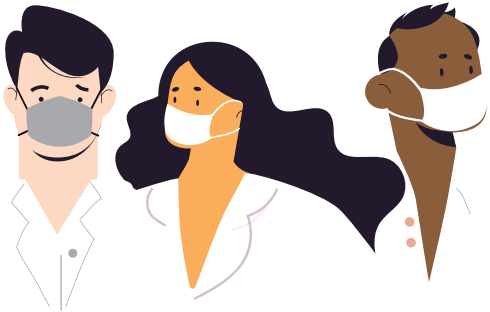



# Effects of COVID-19 on the Agriculture Workforce



In 2020, employers surveyed were **not able to find all the workers** they needed.

**4/10**



About one in five **foreign workers** were **not able to arrive in Canada.**

**1/5**



**71%**



of employers who **reported labour shortages** cited fewer Canadian applicants.

Canadian farmers **lost an estimated 2.9 billion** in **lost sales** in 2020 due to labour shortages tied to COVID-19.

**\$2.9 BILLION**

